

12V Light Control Switch Photoresistor Relay Module Detection Sensor Model: XH-M131



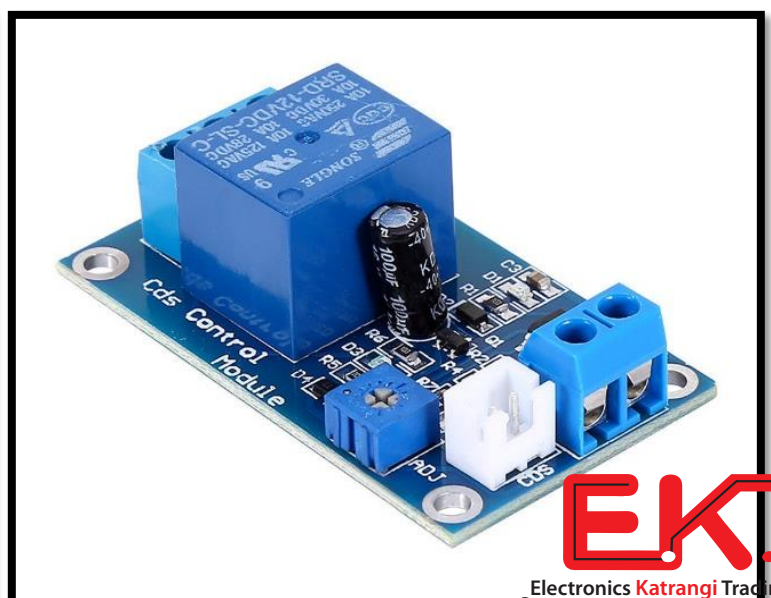
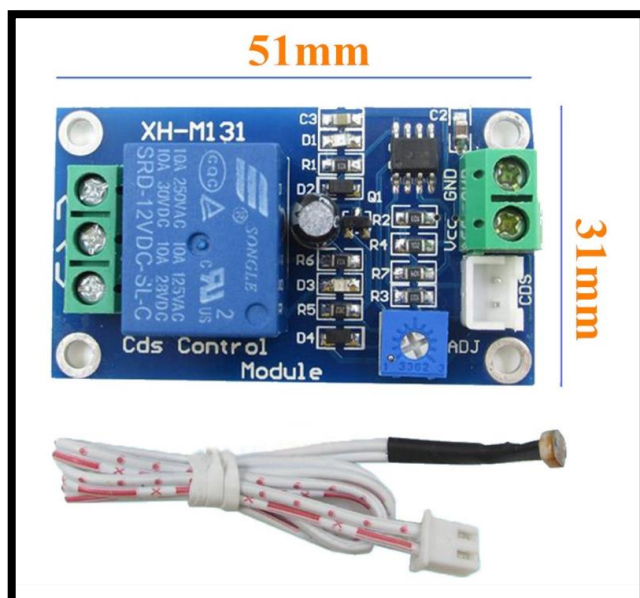
Features:

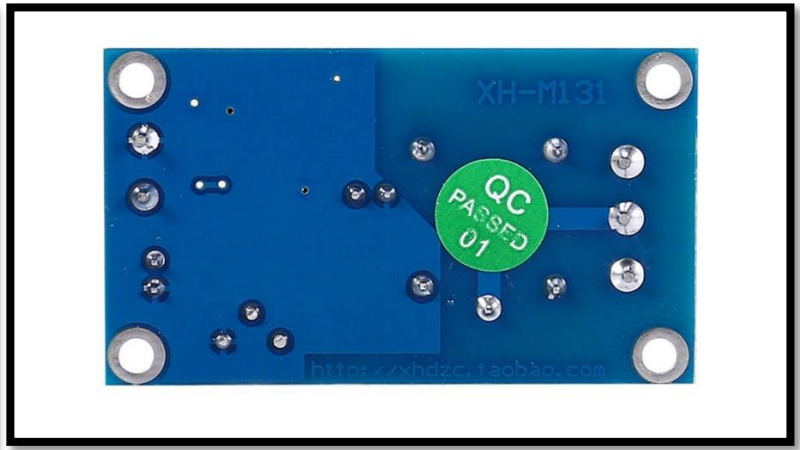
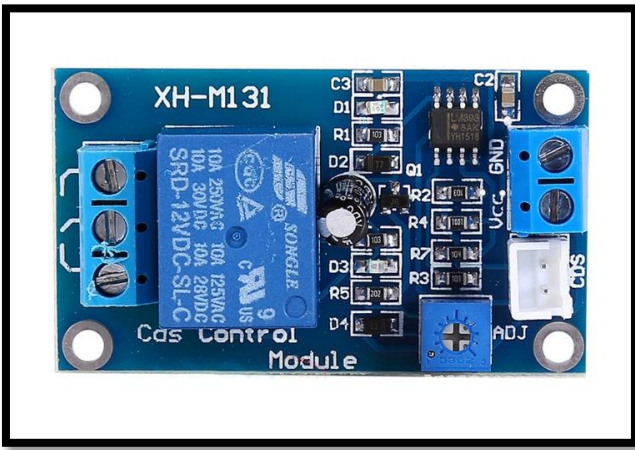
Light detection and brightness detection, detection can be adjusted via potentiometer brightness valve point comes relays, and do all kinds of brightness detection switch, you can control all kinds of street lights automatically turn on at night, during the day and automatically turns off and car supplies control and automation equipment.

Specifications:

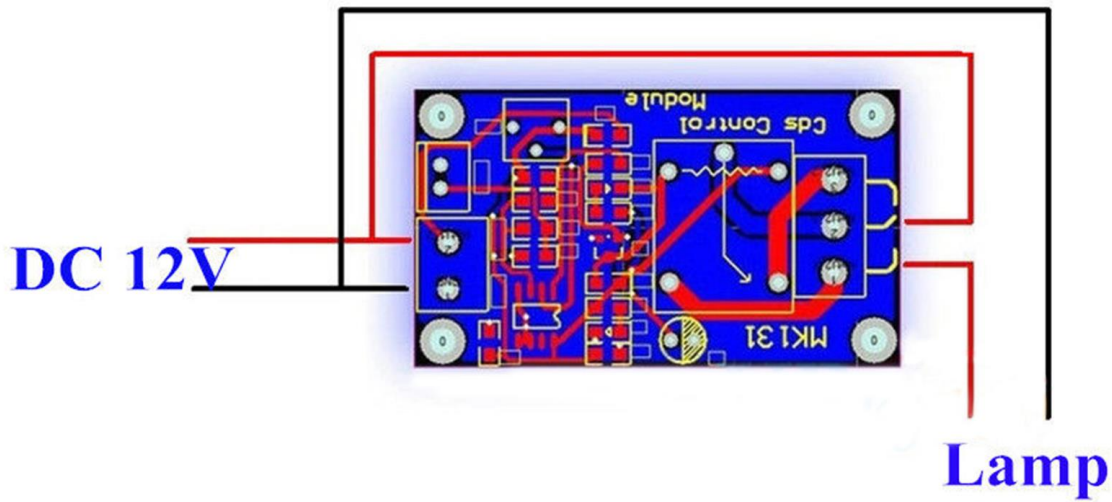
- Power Supply: DC12V
- Operating Current: relay after pull-in: 5V module is less than 50mA
- Before the relay Actuation: less than 5mA
- Load Capacity: AC 0V--250V/10A, DC 0V--30V/10A
- Relay output separately, it can control 0-240V load.
- Relay Working Mode: NO(normally open) or NC(normal closed)
- Module Dimensions: 5.3CM*3.1CM*1.9cm
- Photoresistor Lead Length: 30cm

Product Photos:





Control the connection mode of 12V



Made in China